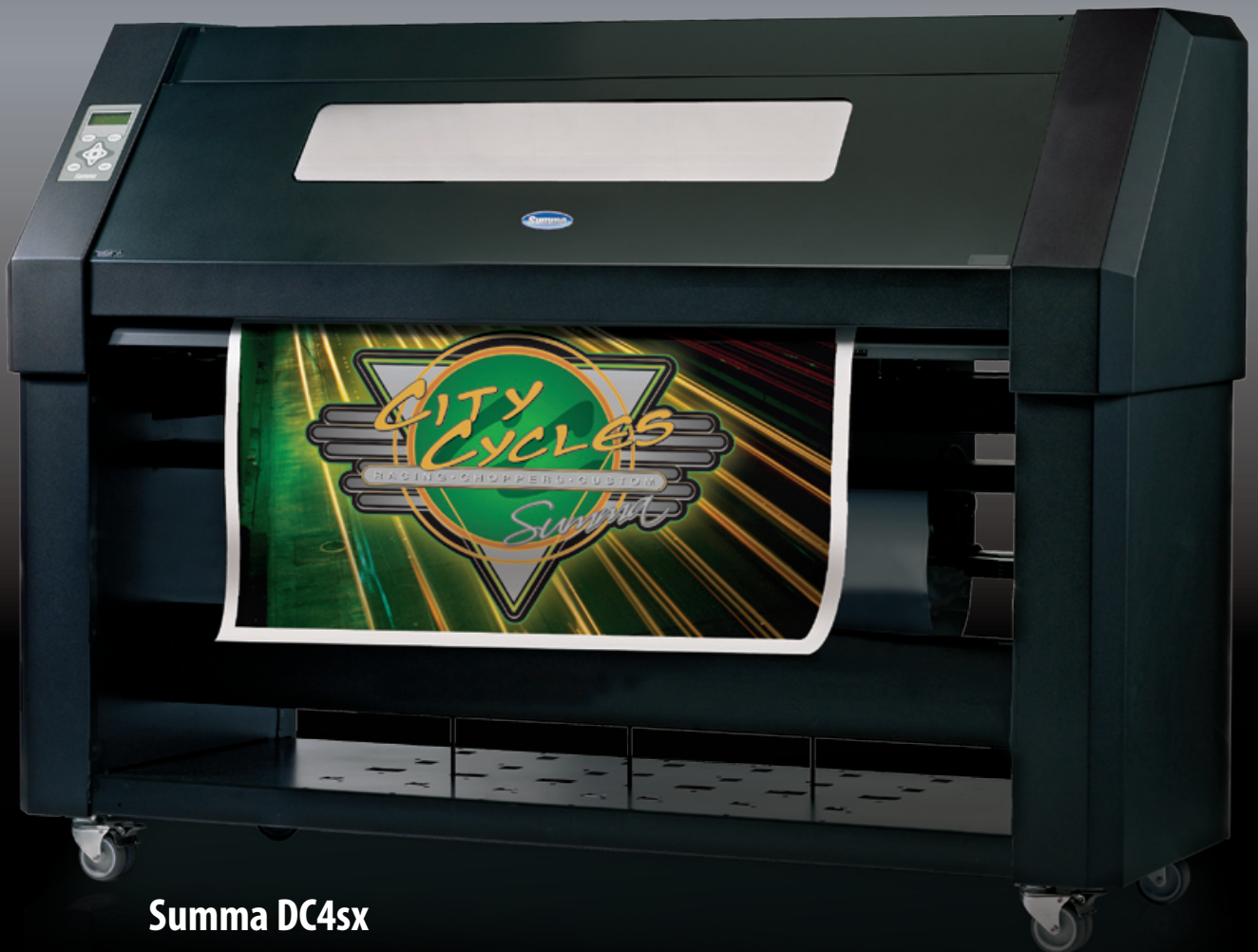


thermal transfer printer-cutter

DC4 SX



Summa DC4sx

30-inch contour-cutting sign printer



Industrial strength printing in a new compact and affordable design

Summa DC4sx is the easy and affordable way to get into digital printing. Its no-mess, maintenance-free design and built-in contour cutting combine for outstanding ease-of-use. And at just \$12,995, including our fast and versatile Color Control RIP + Cut software, it's the most affordably-priced thermal printer in the industry*.

More than just compact and affordable, Summa DC4sx is every bit a Summa DC4-class printer-cutter. Its print-performance comes from our advanced DC4 print-head; the very same head that's in our top-of-the-line 54-inch Summa DC4. Tracking accuracy is also spot-on, thanks to our unique OptiTrac, optical laser tracking system. And cutting is so fast and accurate that it could only be a Summa.

Summa DC4sx is also the most versatile printer we've offered. It prints and cuts a wide variety of media in ultra-popular and cost-efficient 24- and 30-inch widths. Plus, with the automatic tiling feature in our Color Control RIP + Cut software, you can produce images of virtually unlimited size. So your shop will have the flexibility to market everything from tiny labels to huge fleet graphics.

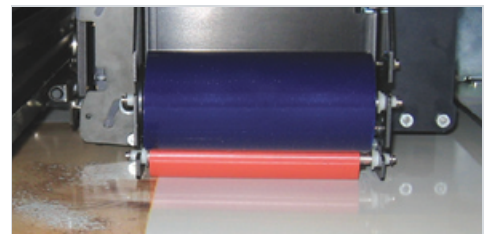
Best of all, Summa DC4sx, like every Summa product, is backed with unlimited toll-free support**. Whether you're new to digital or a seasoned professional, we're there to help you get the most from your Summa equipment.

*Price comparison based on published list prices for popular sign-industry thermal transfer printers, including the Gerber® EDGE FX™ (\$16,995), Matan® Spark™ 1612 (\$39,000), and our own Summa DC4 (\$19,995).

**Toll-free when calling from the US or Canada; international calls may be subject to normal international long distance calling fees.



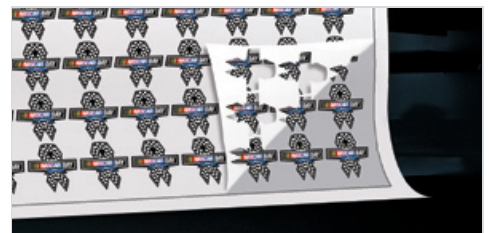
The built-in ribbon-changer holds up to 5 high-capacity SmartRibbon™ cassettes. Each cassette can accommodate any ribbon color, and the printer intelligently identifies the ribbon color, location and usage.



The OptiPrint™ media pre-cleaning system removes dust and debris that can cause image flaws. It delivers optimal print quality in a unique process that cleans the media immediately before the color pass is printed.



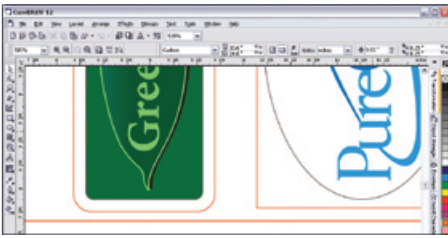
ColorControl's new dual-cut feature lets you contour-cut labels, and then die-cut them in the same or other shapes. Custom label-making is now a one-step process.



With super-accurate contour cutting built in, plus the most durable print technology you can buy, you simply need to print, weed and apply.

Professional custom labels easy as 1-2-3

1: Print



Just add two cut-paths to your graphic, and then send it to Color Control: one path contour-cuts; the second path FlexCuts completely through your media.

2: Punch

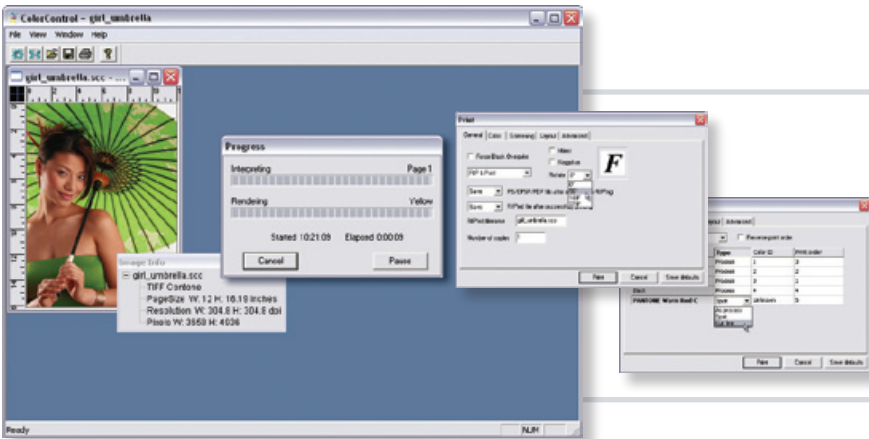


A light push pops out your custom die-cut label. The size and frequency of the perforations are easily adjustable with our exclusive FlexCut feature.

2: Peel



Pull away the excess vinyl to reveal a precision die-cut label on a custom-cut backing that can be any size or shape you wish.



Summa Color Control RIP Software

ColorControl™, our exclusive PostScript® 3 compatible RIP software, is full-featured, easy-to-use and fast. Blazing-fast.

On the same computer, we ripped a 66.7 MB Photoshop EPS file (the girl with green parasol) in ColorControl, Onyx® and FlexiSIGN®. ColorControl parsed and ripped it in just 11 seconds! Onyx took over 2 minutes and FlexiSIGN took over 1 minute. And that's just one medium-sized file.

Included with your DC4sx

Printer and software

- Summa DC4sx 30" Printer-Cutter, fully assembled and ready to roll off crate
- ColorControl software (single user dongle) with unlimited free upgrades
- Summa Printer Control software (unlimited users) with unlimited free upgrades

Accessories

- CD ROM with drivers, software and on-disc manual
- Printed manual
- Power cord
- 15-foot USB cable with cable clamps
- 2 media roll-end flanges
- OptiPrint cleaning system
- 5 universal ribbon cassettes

Supplies

- Full rolls of C, M, Y, and K resin ribbons
- 24" x 150' roll of 3M 2-mil premium white vinyl

Specifications

| | |
|-----------------------|--|
| Width | 30" (76 cm) |
| Speed | Printing : 115.7 Ft ² /hour (10.7 m ²) — Spot; 30.2 Ft ² /hour (2.8 m ²) — Process CMY Cutting : 24 inches-per-second (600 mm/sec) max |
| Method | Printing : Thermal transfer, using outdoor-durable process and/or spot color resin ribbons, and; metallic gold and silver polyester ribbons (indoor use) Cutting : Drag-knife, using standard Summa D-Series blades |
| Resolution | Printing : 609 x 304 dpi (24 x 12 dpmm) maximum hardware; 609 x 609 apparent dpi (24 x 24 dpmm) software Cutting : 0.001" (0.025 mm), 0.005" (0.1 mm) selectable |
| Media width | Variable width from 24 - 30 inches (61cm - 76cm); Recommended widths: 24 & 30 inches (61cm & 76cm) |
| Production width | Printing : Up to 26.4 inches wide (67 cm) Cutting : Up to 26.4 inches wide (67 cm) |
| Media loading | Auto alignment system built-in |
| Media drive | Summa OptiTrac™ active-steering drive using variable-position traction-feed pinch rollers |
| Media tracking | Optical laser tracking system built-in |
| Media supply | Motorized media supply roller built-in |
| Memory | RAM (cache): 64 MB Hard disk (reprint storage): 2 GB |
| Interface | USB 2.0 and Centronics parallel |
| Baud rate | USB 2.0: (1.5Mbps & 12Mbps); Parallel: up to 38,400 baud |
| File support | EPS, PDF and all generic PostScript |
| Power requirements | Connection: standard USA power outlet; Requirement: 100-240 Vac, 48-62 Hz, 85 VA max |
| Operation environment | 60°F to 90°F (15°C to 32°C), 35% to 80% relative humidity, non-condensing |
| Dimensions | Shipping: 76.8" x 35" x 63" (256 x 88 x 160 cm); Equipment: 66.5" x 24.8" x 51.2" (230 x 63 x 130 cm) |
| Weight | Shipping: 639 Lbs (290 kg); Equipment: 430 Lbs (195 kg) |
| Warranty (USA) | Printer : 1 year parts and labor limited warranty Images : Up to 5 years, outdoors, without lamination; restrictions may apply for desert areas or exposure to harsh chemicals or abrasives. |
| Support policy (USA) | Unlimited toll-free technical support for the life of the equipment (transferable) |

Support

As an owner of Summa equipment, you will have access to unlimited toll-free support for as long as you or anyone else owns it. In short, if a product carries our brand, we support it, with one of the most outstanding support teams in the industry. So when you choose Summa, you're choosing more than just a great piece of equipment. You're choosing a company that will stand behind you every step of the way.

For more information, contact your authorized Summa dealer.